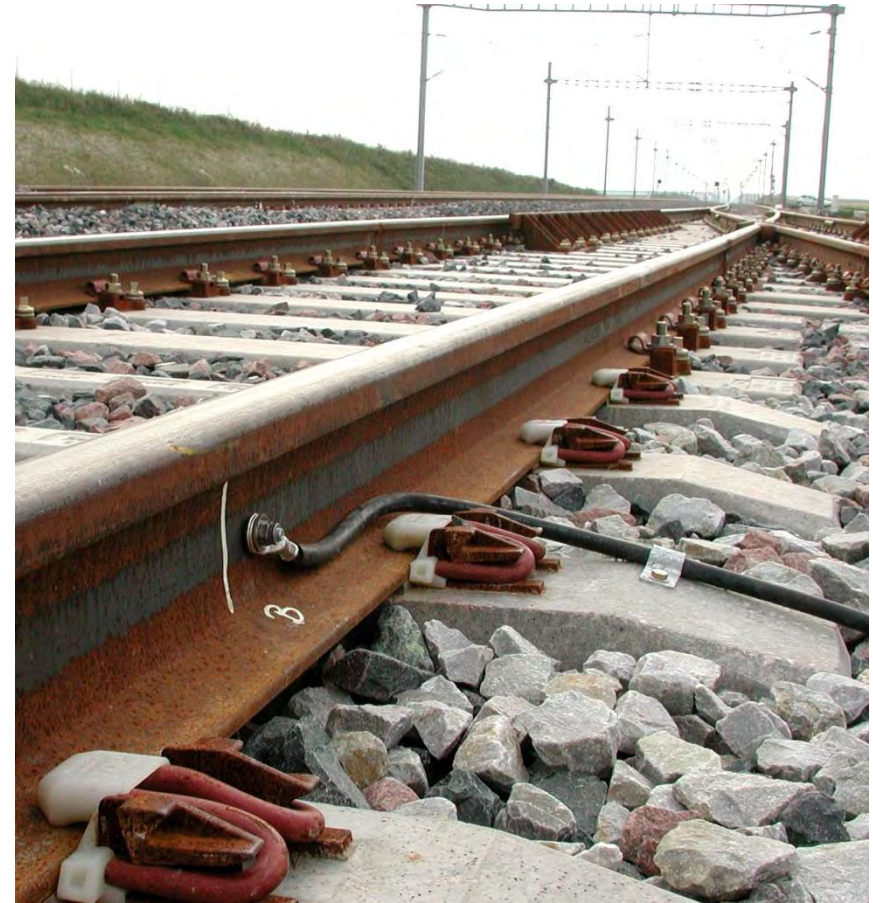
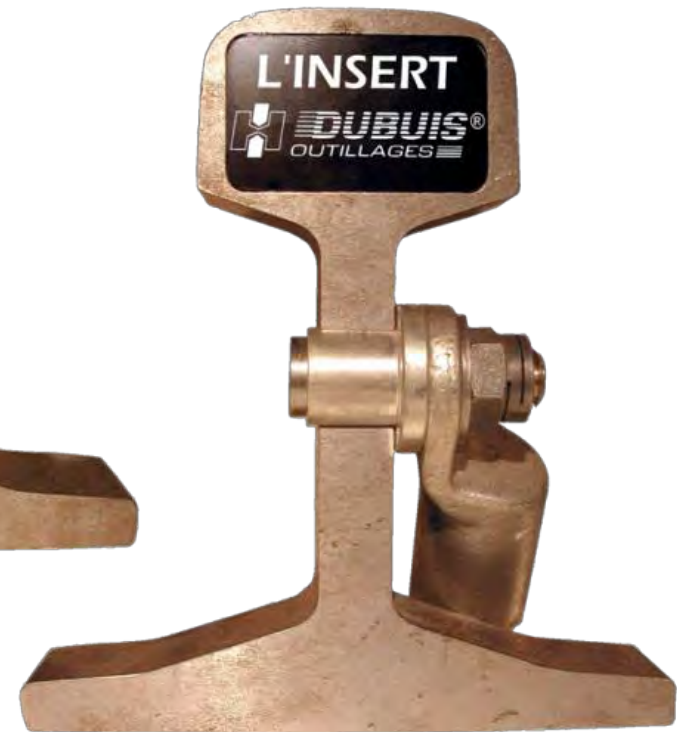


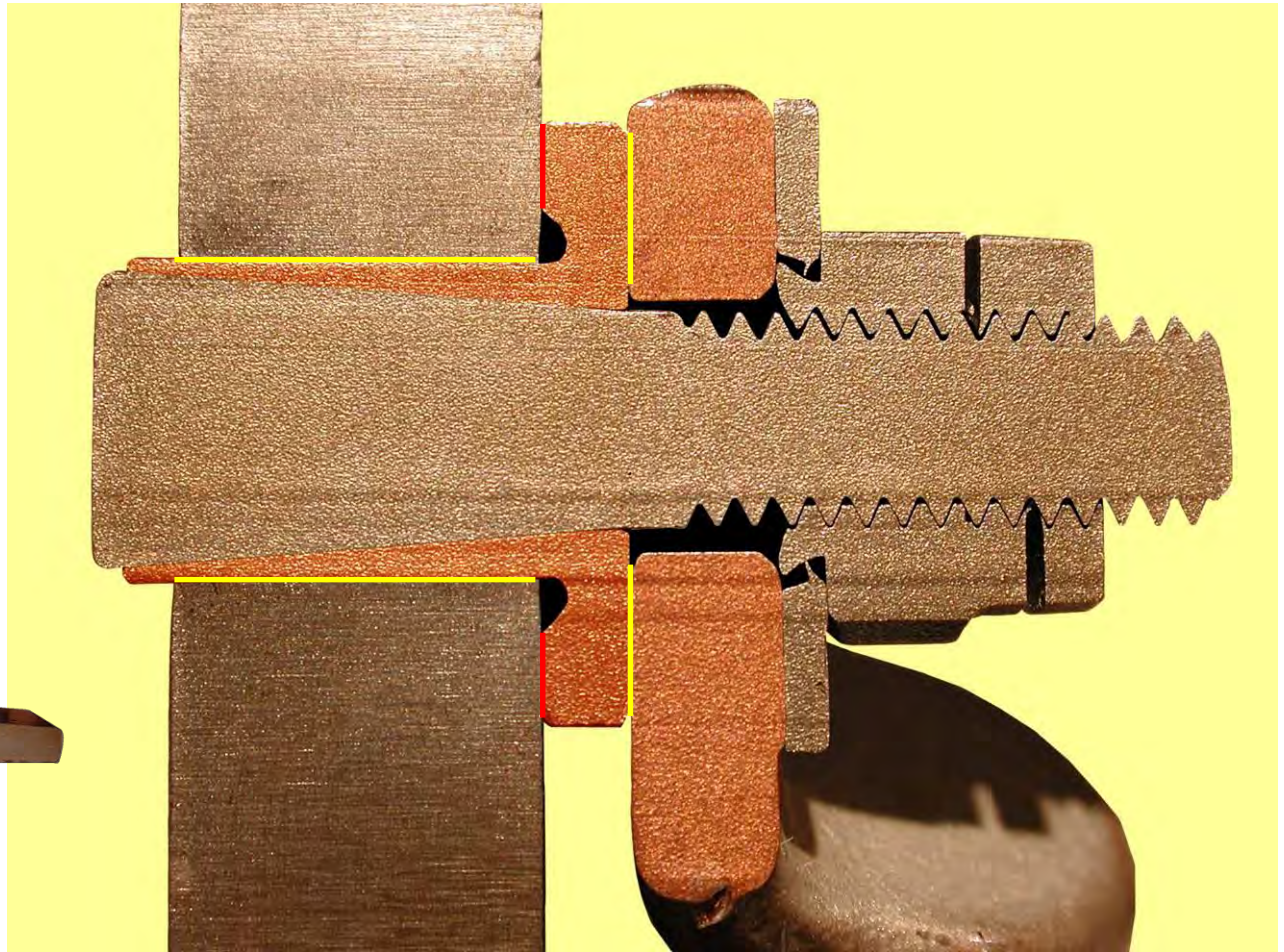
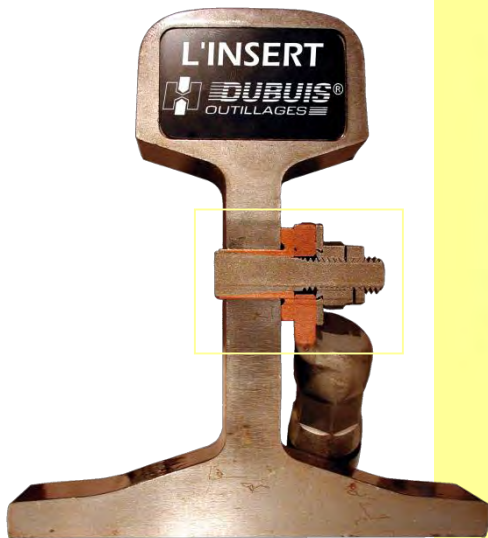
RAILROAD



1. Rail drilling
2. Rail Bonding connection system
3. Connecting







	Part numbers	Bush material	Rail bond thread	Drilling diameter	Bush length	Contact surface: rail bond / rail	Application	Screws and bolts (delivered with rail bond)
	30996	Tin-plated copper	M6	8 mm	17 mm	427 mm²	Signalling	
	30989	Tin-plated copper	M6	8,5 mm	17 mm	453 mm²	Signalling	
	81951	Tin-plated copper	M6	8,5 mm	5,5 mm	146 mm²	Signalling	
SNCF  <i>Approval no.7.393.0882</i>	30951	Stainless steel	M10	13,5 mm	17 mm	721 mm²	Signalling & Return of traction current	
SNCF  <i>Approved</i>	30973	Tin-plated copper	M10	13,5 mm	17 mm	721 mm²	Signalling & Return of traction current	
SNCF  <i>Approval no.7.393.0900</i>	80913	Tin-plated copper	M10	13,5 mm	6,5 mm	275 mm²	Signalling & Return of traction current	
	80917	Tin-plated copper	M12	19 mm	17 mm	1014 mm²	Signalling & Return of traction current	
	81926	Tin-plated copper	M12	19 mm	5,5 mm	328 mm²	Signalling & Return of traction current	
RAILTRACK  <i>Approved</i>	30986	Tin-plated copper	M16	22 mm	21 mm	1451 mm²	Return of traction current	
	81935	Tin-plated copper	M16	22 mm	6,5 mm	449 mm²	Return of traction current	



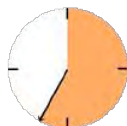
PRCC UIC60
PRCC U50

EASY AND FAST SETTING: in 3 mn only!

DRILLING



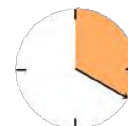
35 sec.



1 Drilling of the rail



20 sec.



2 Chamferings and cleaning of the hole

SETTING



10 sec.



3 Preparation of the rail bond



15 sec.



4 Setting of the rail bond with the calibrated hydraulic tool

CONNECTION



60 sec.



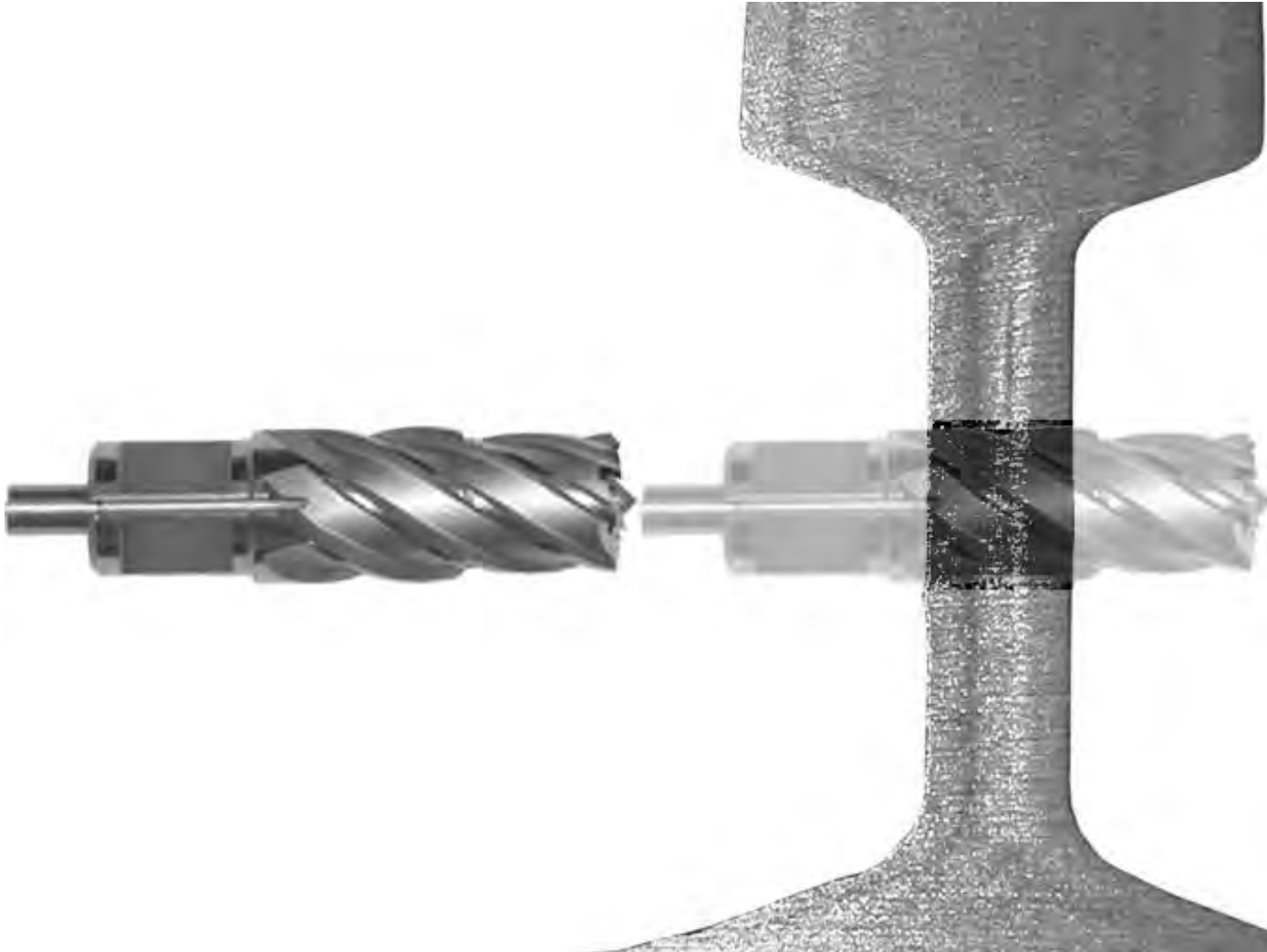
5 Crimping of the connector

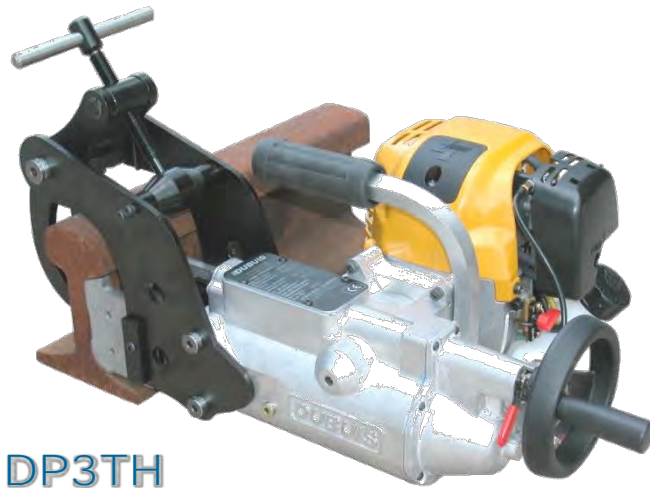


40 sec.



6 Locking of the nut with a calibrated torque wrench





DP3TH



DP3AC2S



Lubricant



Drills and cutters



Chamfering tool











Description	PH1iN	PH2iN	PH3iN <i>Approval no. 0.391.7650</i>	PH4iN	PH6iN
For threaded rail bond...	M6	M8	M10	M12	M16
Calibrated force	10 kN	18 kN	27 kN	37 kN	60 kN
Weight	2,8 kg	2,8 kg	2,8 kg	2,8 kg	2,8 kg

INFO POINT

- ✓ Hand hydraulic tool equipped with a pulling unit for setting rail bond and a bush remover for its possible dismantling. Delivered in a carrying case with room for 1 torque wrench and 1 railbond box.
- ✓ All our hydraulic setting tools are fitted out with a removable handle, allowing setting of rail bond even in case of small clearance (junction crossing).
- ✓ Force of each tool can be checked with a control test gauge. For these control devices, please contact us.



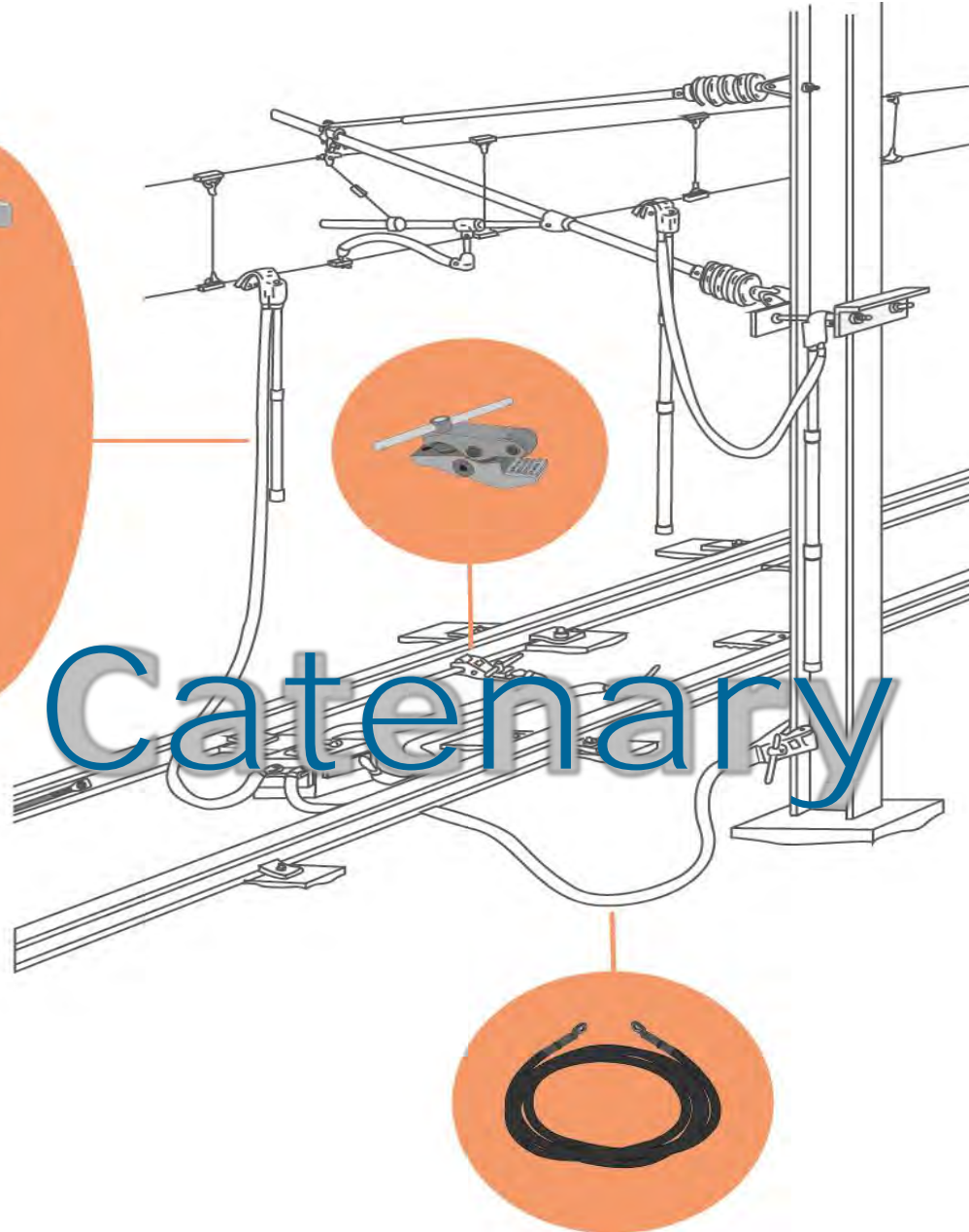


	Capacity Nm	☑	For threaded rail bond...	Socket	A/F dimension
	5-25	1/4"	M6	 OFACR10	10
			M8	 OFACR13	13
	20-100	1/2"	M10	 OFACS16H	16
	40-200	1/2"	M12	 OFACS18H	18
			M16	 OFACS24H	24



RAILTRACK



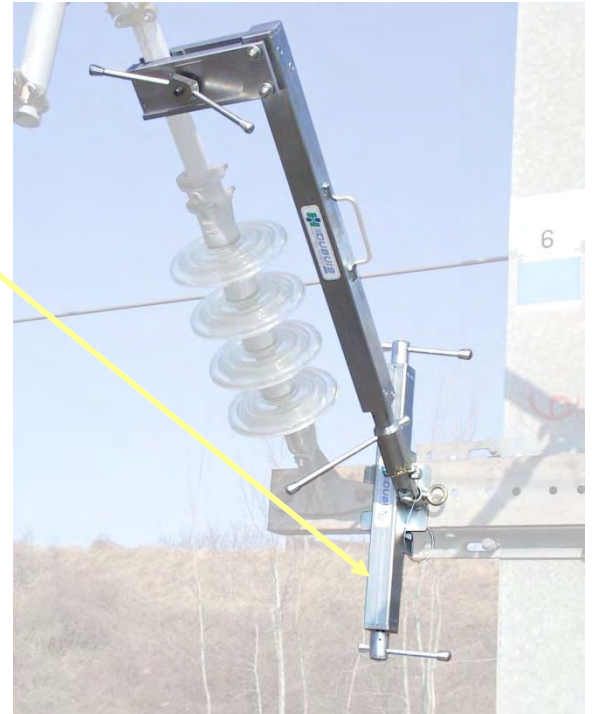






FCI : insulator
remover

FCP : foot

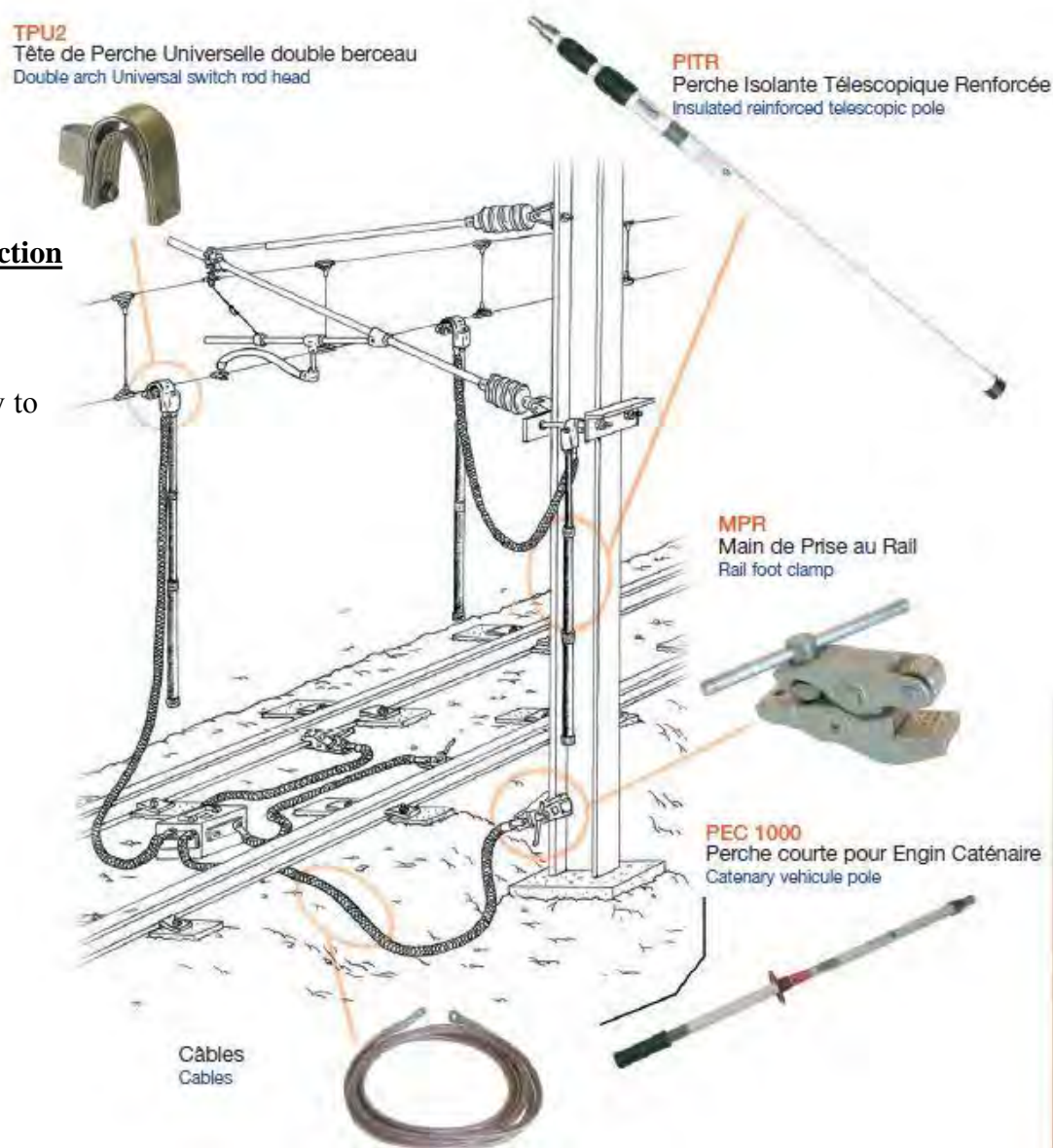


FCC : cantilever unit
remover



Different grounding connection

- « classic » : catenary to rail (CLR)
- Rail to Rail (RR)
- Flying connection (catenary to Post – CV)
- And Post to Rail (RS)



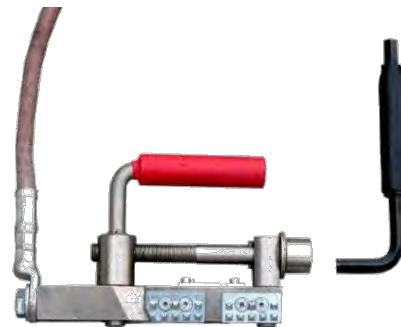
PITM : insulated reinforced telescopic pole



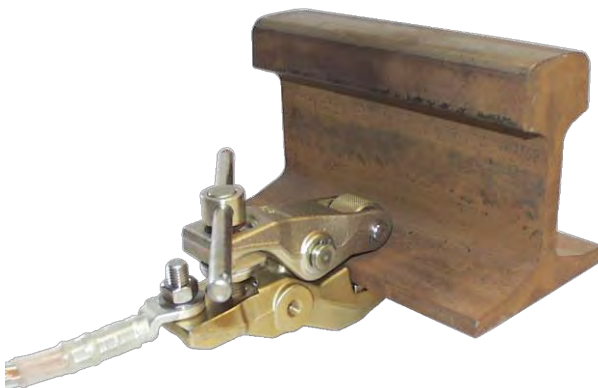
TPU2 : switch rod head



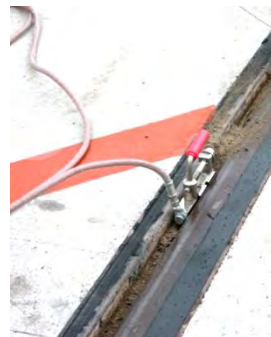
Cables for
Temporary connection

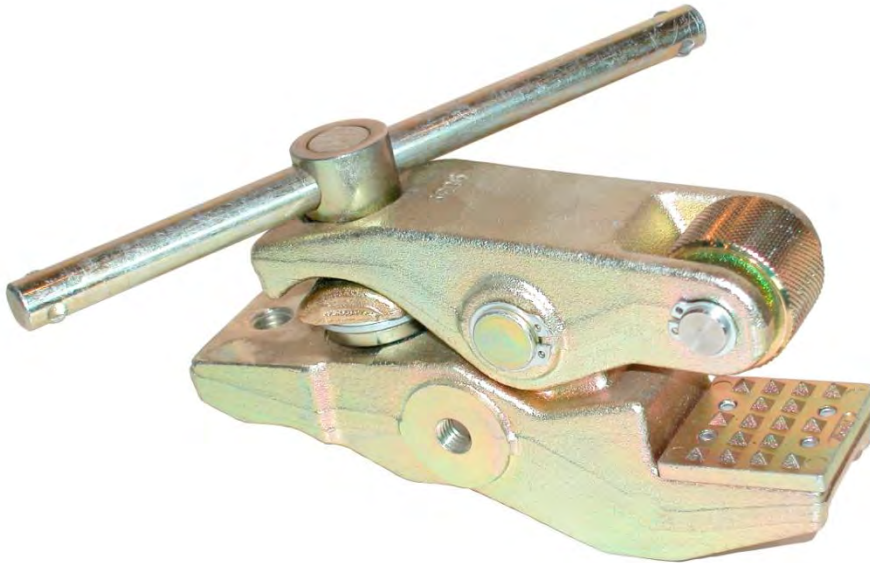


MPRG: Groove rail foot clamp



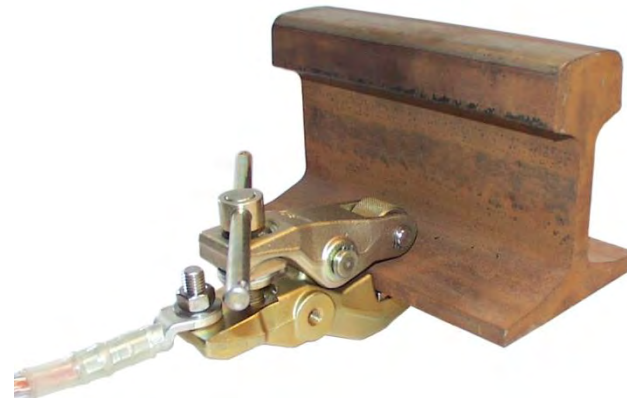
MPR : rail foot clamp

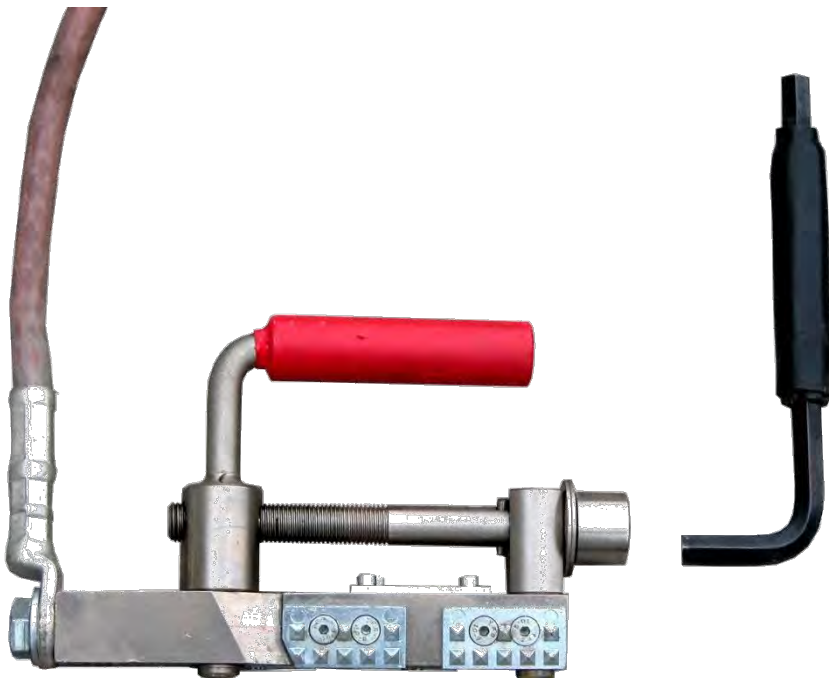




Rail foot clamp:

- Tight hand screwing
- Diamond brad plate
- High resistance steel





- Groove rail foot clamp
- Tight hand screwing
 - Diamond brad plate
 - High resistance steel



Double arch universal switch rod head:

- All supports universal head
- Double arch
- Tinned copper braid



Insulated reinforced telescopic pole:

- Fast adjustment length
 - Reinforced tube (fiberglass)
- Usable length from 2,15m to 5,60m (7,60 with extension)
 - Foam top tube (CEI 60855-1 standard)



- **An immediate information without interpretation of the operator :**
 - Signalling acoustic and red LED high visibility indicates voltage presence.
 - Complete autotest validated by green LED
- **No compromise on operator safety :**
 - The continuity on earth is guaranteed by a powerful contact magnet.
 - The current passing through the equipment wire remains always below the safety threshold (<3,5mA).
 - Immune against an inappropriate usage on SNCF TGV line.
- **Special features designed for network manager :**
 - Additional indications on DC voltage from loads and/or AC induce voltage (generated by neighbour energized lines)
 - LED blue : voltage detection confirmed or AC induced.
 - LED orange + sound : voltage detection of DC voltage from loads,
- **A unit designed for field works :**
 - The flexible adapter AFLEX protect from falls.
 - A detector being light for easy operation
 - Operates by any weather.
 - A quick and safe implementation by the magnet connection to earth.



Magnetic handle
for contact to rail



Adapter
AFLEX



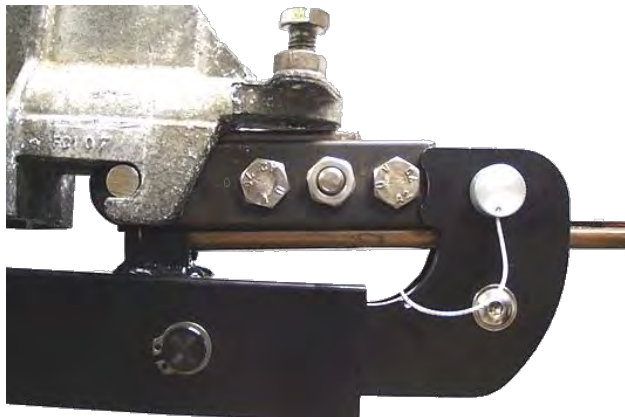
Kink remover:

- For 107 sqmm and 150 sqmm contact wire.
- In one operation the kink disappears





Section insulator remover







PEP

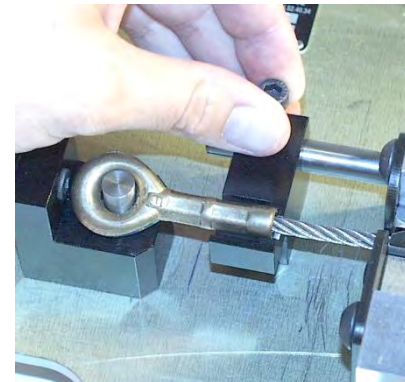
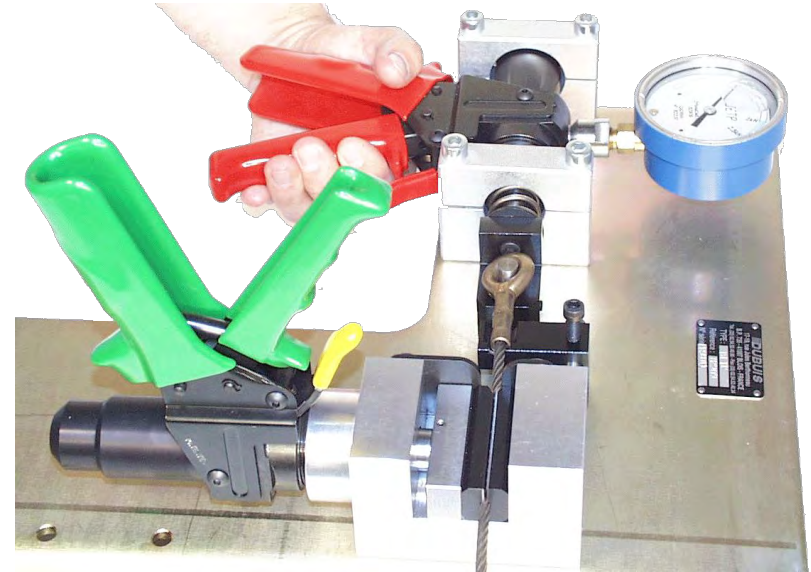
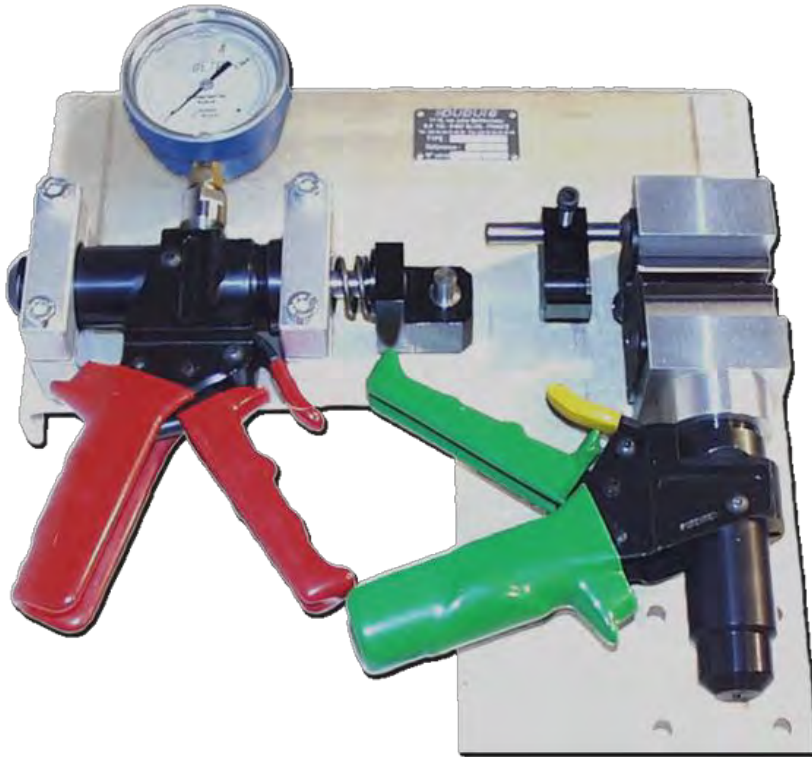
Temporary dropper



OGDP

Claw jaw →





Crimp test bench

Crimping





XH220 : light weight crimping head



Dies sets



XH250R : reinforced crimping head

PHE705: 220V hydraulic group



PHE706 : 220V hydraulic group



GHA702 : battery hydraulic group



High pressure flexible hose





CCUM 12



CCUM 22



FORCE : 9 kN

Weight : 20 kg

STROKE : 226 mm

Lever Length : 900 mm

Hermetic tank

Easy use

Sturdy and reliable



A Legacy of Quality.

STANLEY®

MAKE SOMETHING GREAT™

A Future of Growth.