

Sleeve Anchors

This sleeve anchor is a through fixing, thus ensuring fast and simple installation. Ideal for many security applications in a wide variety of base materials. The unique Kinmar® drive offers an accurate torque controlled security fixing which can be re-torqued if necessary. There is a permanent and removable version available. The 6-Lobe Pin anchors in A2 stainless steel are available in Button Head and Countersunk offering a removable high torque anchor fixing.

Please note: These anchors are not intended for heavy duty structural applications.

Requires matching tooling



KINMAR® PERMANENT/REMOVABLE
DRIVER SOCKETS



6-LOBE PIN INSERT BIT

ANCHORS

Manufactured in bright zinc plated (CR-3) steel and A2 stainless steel.

1
WAY

BRIGHT ZINC PLATED ■ KINMAR® PERMANENT

BOX QTY 50



TECHNICAL SIZE	PART CODE	DRILL HOLE DIAMETER (mm)	MAXIMUM FIXTURE THICK-NESS (mm)	MINIMUM HOLE DEPTH* (mm)	RECOMMENDED TIGHTENING TORQUE (nm)	SAFE STATIC LOADS FOR 5.8 THREADED STUD (kn)		DRIVER SIZE
						TENSION	SHEAR	
M6 x 45mm	KMPSA0645	8	6	37	7	1.1	2.0	KM06P
M8 x 50mm	KMPSA0850	10	6	45	15	1.9	6.5	KM08P
M8 x 60mm	KMPSA0860	10	16	45	15	1.9	6.5	KM08P
M8 x 70mm	KMPSA0870	10	25	45	15	1.9	6.5	KM08P
M8 x 90mm	KMPSA0890	10	45	45	15	1.9	6.5	KM08P
M10 x 60mm	KMPSA1060	12	8	52	31	3.0	8.5	KM10P
M10 x 70mm	KMPSA1070	12	18	52	31	3.0	8.5	KM10P
M10 x 80mm	KMPSA1080	12	25	52	31	3.0	8.5	KM10P
M10 x 95mm	KMPSA1095	12	45	52	31	3.0	8.5	KM10P

2
WAY

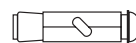
BRIGHT ZINC PLATED ■ KINMAR® REMOVABLE

BOX QTY 50



TECHNICAL SIZE	PART CODE	DRILL HOLE DIAMETER (mm)	MAXIMUM FIXTURE THICK-NESS (mm)	MINIMUM HOLE DEPTH* (mm)	RECOMMENDED TIGHTENING TORQUE (nm)	SAFE STATIC LOADS FOR 5.8 THREADED STUD (kn)		DRIVER SIZE
						TENSION	SHEAR	
M6 x 45mm	KM RSA0645	8	6	37	7	1.1	2.0	KM06R
M8 x 50mm	KM RSA0850	10	6	45	15	1.9	6.5	KM08R
M8 x 60mm	KM RSA0860	10	16	45	15	1.9	6.5	KM08R
M8 x 70mm	KM RSA0870	10	25	45	15	1.9	6.5	KM08R
M8 x 90mm	KM RSA0890	10	45	45	15	1.9	6.5	KM08R
M10 x 60mm	KM RSA1060	12	8	52	31	3.0	8.5	KM10R
M10 x 70mm	KM RSA1070	12	18	52	31	3.0	8.5	KM10R
M10 x 80mm	KM RSA1080	12	25	52	31	3.0	8.5	KM10R
M10 x 95mm	KM RSA1095	12	45	52	31	3.0	8.5	KM10R

* Minimum hole depth is for maximum fixture thickness. For thinner fixtures increase the hole depth accordingly.



2
WAY

COUNTERSUNK ■ A2 STAINLESS STEEL ■ 6-LOBE PIN

BOX QTY 50



TECHNICAL SIZE	PART CODE	DRILL HOLE DIAMETER (mm)	MAXIMUM FIXTURE THICK-NESS (mm)	MINIMUM HOLE DEPTH* (mm)	RECOMMENDED TIGHTENING TORQUE (nm)	SAFE STATIC LOADS (kn)		DRIVER SIZE
						TENSION	SHEAR	
M6 x 50mm	RTCSA0650	8	10	37	7	1.2	2.3	T30
M8 x 55mm	RTCSA0855	10	10	45	15	2.2	7.5	T40
M8 x 80mm	RTCSA0880	10	25	45	15	2.2	7.5	T40
M10 x 60mm	RTCSA1060	12	10	52	31	3.5	9.6	T45
M10 x 80mm	RTCSA1080	12	25	52	31	3.5	9.6	T45

2
WAY

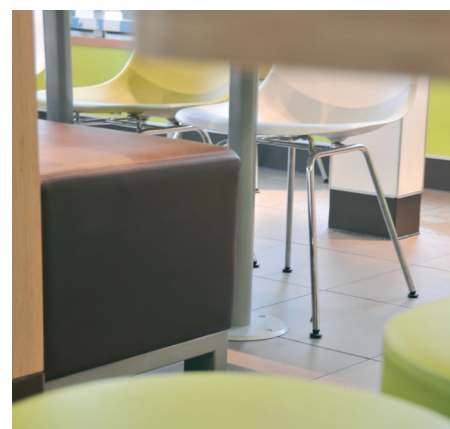
BUTTON HEAD ■ A2 STAINLESS STEEL ■ 6-LOBE PIN

BOX QTY 50



TECHNICAL SIZE	PART CODE	DRILL HOLE DIAMETER (mm)	MAXIMUM FIXTURE THICK-NESS (mm)	MINIMUM HOLE DEPTH* (mm)	RECOMMENDED TIGHTENING TORQUE (nm)	SAFE STATIC LOADS (kn)		DRIVER SIZE
						TENSION	SHEAR	
M6 x 45mm	RTBSA0645	8	10	37	7	1.2	2.3	T30
M8 x 55mm	RTBSA0855	10	10	45	15	2.2	7.5	T40
M8 x 75mm	RTBSA0875	10	25	45	15	2.2	7.5	T40
M10 x 65mm	RTBSA1065	12	10	52	31	3.5	9.6	T45
M10 x 80mm	RTBSA1080	12	25	52	31	3.5	9.6	T45

* Minimum hole depth is for maximum fixture thickness. For thinner fixtures increase the hole depth accordingly.



IDEAL FOR . . .

Saving valuable time and money when fixing to concrete, brickwork and masonry such as:

- Smoking Shelters
- Bike Racks
- Signage
- Street Furniture
- Barrier System



SHIELD ANCHORS



Shield Anchors

This Shield Anchor is designed to save time and money as welding or deforming hexagon bolt heads is not very efficient. Available as a Button Head in a removable version which has a Pin Hex drive and also a permanent version which has a standard hex socket drive which is drilled out once installed.

Please note: These anchors are not intended for heavy duty structural applications.

Requires matching tooling



Manufactured in bright zinc plated (CR-3) steel.



BUTTON HEAD ■ BRIGHT ZINC PLATED ■ PIN HEX BOX QTY 50



TECHNICAL SIZE	PART CODE	DRILL HOLE DIAMETER (mm)	MAXIMUM FIXTURE THICK- NESS* (mm)	MINIMUM HOLE DEPTH** (mm)	RECOMMENDED TIGHTENING TORQUE (nm)	SAFE STATIC LOADS (kn)		DRIVER SIZE
						TENSION	SHEAR	
M8 x 65mm	SHAPH0865	14	25	50	15	4.8	4.4	H50
M10 x 75mm	SHAPH1075	16	25	60	27	6.2	6.1	H60

- This heavy duty shield anchor is complete with 10.9 grade pin hex button head. This enables the fixing to be removed using the correct security installation tool.

* Max without washer
** Minimum hole depth quoted is for maximum fixture thickness. For thinner fixtures increase the hole depth accordingly



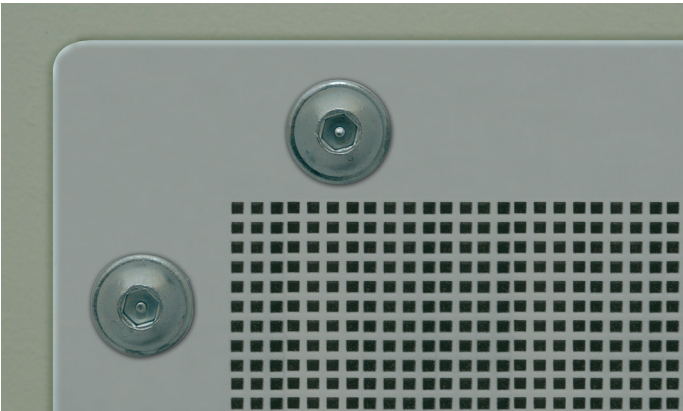
BUTTON HEAD ■ BRIGHT ZINC PLATED ■ DRILL OUT BOX QTY 50



TECHNICAL SIZE	PART CODE	DRILL HOLE DIAM- ETER (mm)	MAXIMUM FIXTURE THICK- NESS* (mm)	MINIMUM HOLE DEPTH** (mm)	RECOM- MENDED TIGHTENING TORQUE (nm)	SAFE STATIC LOADS (kn)		DRIVER SIZE	HSS DRILL OUT SIZE MM
						TENSION	SHEAR		
M8 x 65mm	SHADO0865	14	25	50	15	4.8	4.4	STD 5mm HEX BIT	6.5
M10 x 75mm	SHADO1075	16	25	60	27	6.2	6.1	STD 6mm HEX BIT	7.5

- This innovative time saver was primarily designed for fixing security grilles. This system saves the installer from welding bolt heads or rounding them off for security. All you have to do is fix the fastener and drill out the standard 8.8 grade socket aperture using a HSS drill bit to leave a circle using drill size as shown.

* Max without washer
** Minimum hole depth quoted is for maximum fixture thickness. For thinner fixtures increase the hole depth accordingly



SHIELD ANCHORS



Shield Anchors



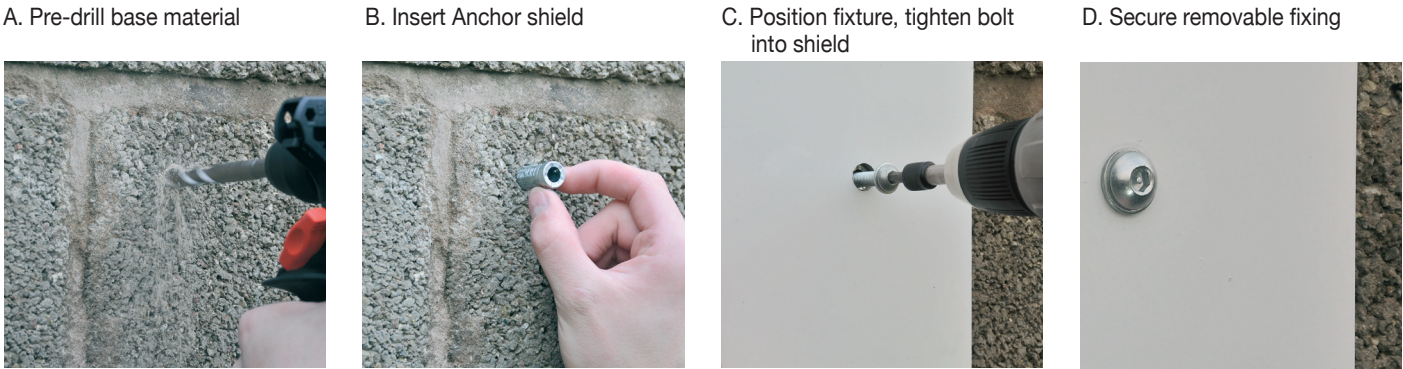
IDEAL FOR . . .

Saving valuable time and money when fixing:

- Grilles
- Bars
- Shelters
- Playground Equipment
- Security Lighting
- CCTV Systems
- Road Signs

and more . . .

HOW TO INSTALL SHIELD ANCHORS (BOTH TYPES)



EXTRA INSTALL STEPS FOR DRILLOUT VERSION ONLY

