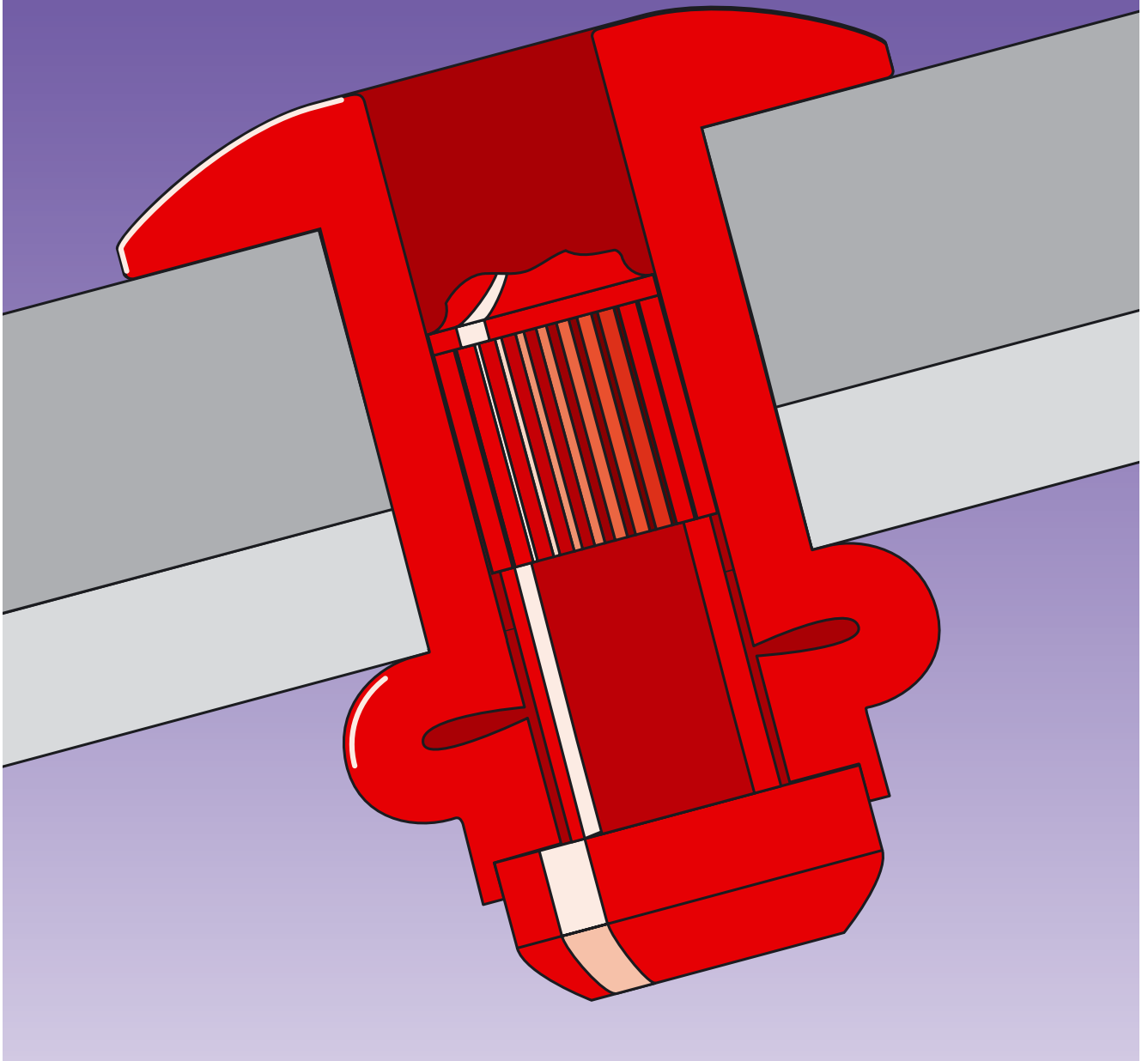


## ■ TIFAS<sup>®</sup> Grip blind rivets



TITGEMEYER Td1447GB(1011)1

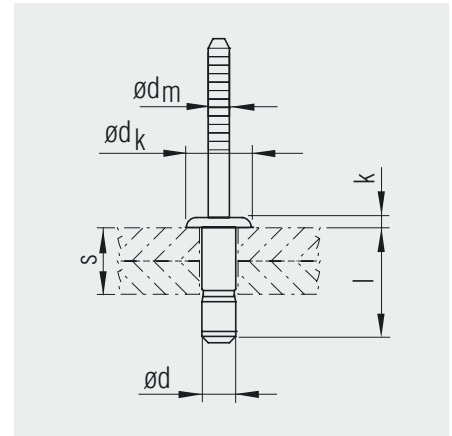
# TIFAS® Grip blind rivets

Dome head

## Material

**Sleeve**  
Steel SAE 1006  
zinc, passivate

**Mandrel**  
Steel  
zinc, passivate

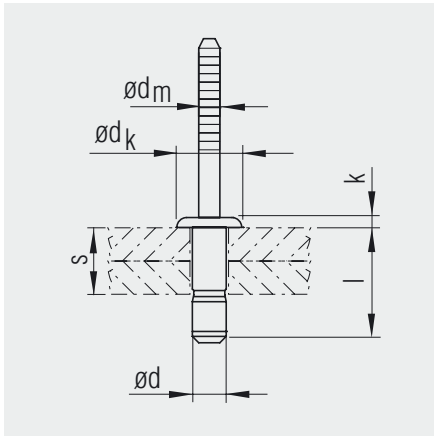


Nominal size- $\phi$ d [mm]	Hole- $\phi$ [mm]	Grip range s [mm]	Sleeve length $l \pm 0.3$ [mm]	Head		Mandrel $\phi$ $d_m \text{ nom}$ [mm]	Strength <sup>1</sup> nominal		Part No.
				$\phi$ $d_k \pm 0.3$ [mm]	Height $k \pm 0.25$ [mm]		Shear <sup>2</sup> [N]	Tensile [N]	
4.0	4.1 – 4.2	1.0 – 3.0	7.7	7.7	1.3	2.6	2400	2800	-
		3.0 – 5.0	9.7	7.7	1.3	2.6	3500	2800	-
		5.0 – 7.0	12.7	7.7	1.3	2.6	4100	2800	-
4.8	5.0 – 5.1	1.5 – 3.5	8.8	9.3	1.3	3.0	3400	3800	<b>413 250</b>
		3.5 – 6.0	11.3	9.3	1.3	3.0	4200	3800	<b>413 251</b>
		6.0 – 8.5	14.3	9.3	1.3	3.0	5600	3800	<b>413 252</b>
6.0	6.1 – 6.3	1.5 – 4.0	10	12	1.8	3.98	4800	-	-
		3.0 – 6.0	13	12	1.8	3.98	5790	-	-
		6.0 – 9.0	16	12	1.8	3.98	8500	-	-
		9.0 – 12.0	19	12	1.8	3.98	9400	-	-

<sup>1</sup> Minimum based on rivet failure

<sup>2</sup> The shear strength is affected by the position of the broken mandrel on the shear plane

We reserve the right to amend specifications at any time.



Dome head  
with grooved mandrel

**Material**

■ **Sleeve**  
Stainless steel A2 (1.4567)

■ **Mandrel**  
Stainless steel A2 (1.4301)



Blind rivets

Nominal size- $\varnothing$ d [mm]	Hole- $\varnothing$ [mm]	Grip range s [mm]	Sleeve length $l \pm 1,0-0,2$ [mm]	Head		Mandrel $\varnothing$ $d_m \text{ nom.}$ [mm]	Strength <sup>1</sup> nominal		Part No.
				$\varnothing$ $d_k \pm 0,3$ [mm]	Height k $\pm 0,3$ [mm]		Shear [N]	Tensile [N]	
3.2	3.3 – 3.4	1.0 – 3.0	7.5	6.3	1.0	2.1	2050	1850	413 400 000
		3.0 – 5.0	9.5	6.3	1.0	2.1	2050	1850	413 401 000
		5.0 – 7.0	11.5	6.3	1.0	2.1	2050	1850	413 402 000
4.0	4.2 – 4.4	1.0 – 3.0	7.5	7.7	1.3	2.7	5200	4000	413 410 000
		3.0 – 5.0	9.5	7.7	1.3	2.7	5200	4000	413 411 000
		5.0 – 7.0	12.5	7.7	1.3	2.7	5200	4000	413 412 000
4.8	5.0 – 5.2	1.5 – 3.5	9.5	9.2 <sup>2</sup>	1.2	3.0	5500	5000	413 420 000
		3.5 – 6.0	11.5	9.2 <sup>2</sup>	1.2	3.0	5500	5000	413 421 000
		6.0 – 8.5	14.5	9.2 <sup>2</sup>	1.2	3.0	5500	5000	413 422 000

<sup>1</sup> Minimum based on rivet failure

<sup>2</sup> Tolerance +/- 0,5 mm

We reserve the right to amend specifications at any time.

# NOTES

